

Customer Care Solutions

NPL-2 Series Cellular Phones

5 – Disassembly Instructions

Table of Contents

Description	Page No.
Disassembly instructions	3
Remove C Cover	3
Remove A Cover	3
Remove attaching screws	3
Remove Module from B-Cover	3
Separate UI-Shield from PWB	4
Remove Speaker	4
Remove Shielding from B-Cover	4
Remove IRDA	5
Remove Power Key	5
Remove Antenna	5
Remove Vibra Motor	5
Remove Microphone	6
Remove DC-Jack	6
Remove Release Spring	6
Remove SIM Flap	6
Exchange of Battery Connector X103	7

Disassembly Instructions

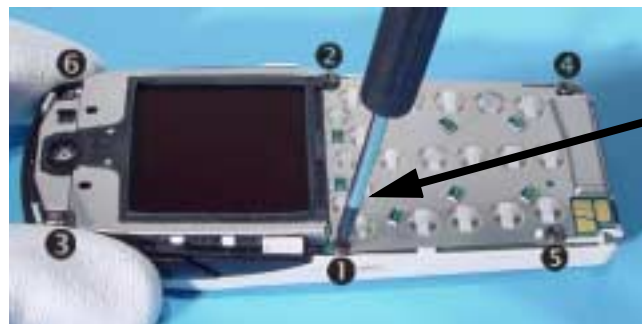
Press the Release Button before removing the C-Cover.



Remove A-Cover as shown in the picture.



Unscrew the six T6 attaching screws, using the order shown. For assembly, the reverse order and a torque of 20Ncm must be used.



Torque
20Ncm for
assembly

Take the module from the B-Cover and unplug the display connector carefully by removing UI-Shield from PWB.



Separate the UI-Shield from PWB carefully, because Key Dom is attached with adhesive Tape.



Remove Speaker. Note the guiding pin when assembling.



Take a clean cloth and press LCD near Speaker from the UI-Shield. Be sure that your workplace is always clean and the Key Dom tape doesn't get dirty.



The Shielding is attached with hooks at its backside. To remove the Shielding from B-Cover you first have to expand B-Cover. Then pull up the Shielding.



To remove IRDA-Frame from Antenna, SRT-6 can be used to unlock the snap.



Remove Power Key.



Use also SRT-6 to remove the Antenna.



Use tweezers as a lever when removing the Vibra Motor.



Use tweezers to pull up Microphone.



To remove the DC-Jack, place tweezers between the spring contacts and under the Jack. You'll need to use additional force to pull the Jack upwards.



A straight bladed screwdriver can be used as a lever to remove the Release Spring.

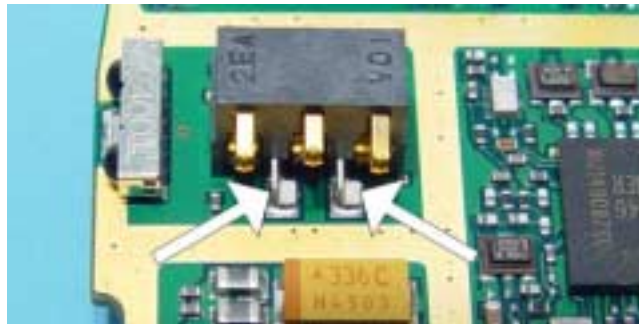


Expand B-Cover carefully and remove SIM- Flap.



Exchange of Battery Connector X103

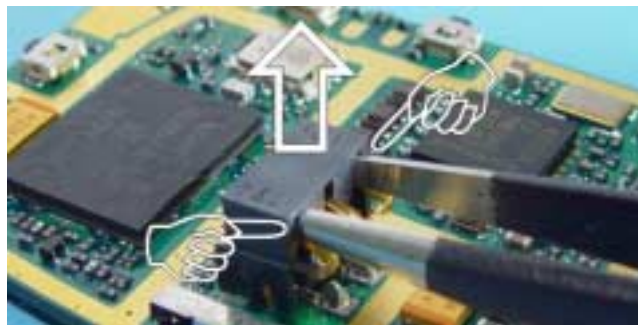
These are the two soldered support angles.



Use a side cutter to cut the support angles.



Push tweezers in outside openings of battery connector and lift up the plastic cover.



Desolder all pins and clean the pads.



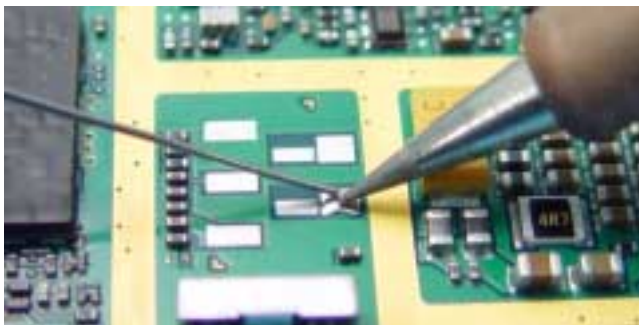
Note that you need a soldering iron with higher temperature, when cleaning or soldering the ground pad.



Note location markings to fit the connector precisely.



Tin one of the pads to fix the connector before soldering the following pins.



Place connector between the markings and solder first support angle. If the position is exact, solder the other pins.

